

# VisAge

## What is it?

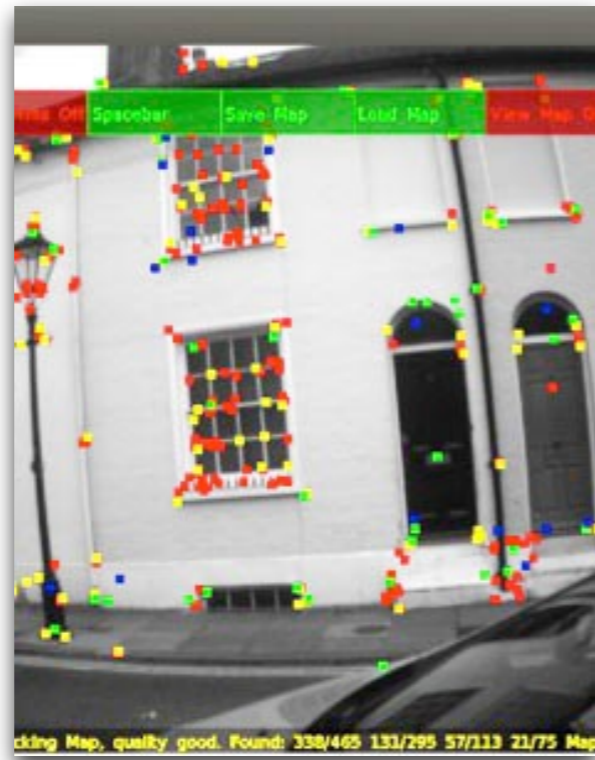
VisAge is an application that makes a mobile device behave like an X-ray camera and time machine rolled into one.



VisAge uses Augmented Reality to reveal the spaces in a building and the people who occupied them more than a century ago and is a platform to tell their stories.

## How does it work?

VisAge utilises the mobile device's camera to recognize the façade of a building, track it on the screen, then overlay a 3D environment to create the Augmented Reality.



VisAge then uses occupancy data for the building to populate the virtual interior with representations of the people who lived there through six decades in time.

## Why is it here?

Today we are demonstrating a basic prototype that 'sees' inside a house and visualises typical residents of around 1850 and 1900 and plays their audio commentary.



VisAge is a simple test-bed for the public to try and let us know what they think, so that we can use that feedback to make decisions about how to develop it in the future.

## Who made it?

Researchers and students at University College London designed the science behind VisAge; volunteers from The Regency Town House provided the cultural heritage content.



### University College London

Sebastian Axelsen

Andras Takas

Simon Julier

Will Steptoe

e: [S.Julier@ucl.ac.uk](mailto:S.Julier@ucl.ac.uk)

### The Regency Town House

Volunteers and students

Phil Blume

Nick Tyson

e: [phil@rth.org.uk](mailto:phil@rth.org.uk)